

INSTALLATION MANUAL SNMP ADAPTER

REV.	Date	Prepared by	Checked by	Issued by	ID: NUMBER
Issue/000	2008-02-01	M. Bugliesi	A. Ruggiero	P. Baggi	IV 291E
					Page 1 of 7 + FR
Proprietà riservata - A termini di legge è rigorosamente vietato riprodurre o rendere noto a terzi il contenuto del presente documento					
This is a propriety of Siel - Do not reproduce and transmit the content of this document to third parties					

Indice generale

1	Introduction.....	3
2	SNMP Adapter Hardware Installation.....	3
3	SNMP Adapter Software Installation.....	4

REV.	Date	Prepared by	Checked by	Issued by	ID: NUMBER
Issue/000	2008-02-01	M. Bugliesi	A. Ruggiero	P. Baggi	IV 291E
					Page 2 of 7 + FR
Proprietà riservata - A termini di legge è rigorosamente vietato riprodurre o rendere noto a terzi il contenuto del presente documento					
This is a propriety of Siel - Do not reproduce and transmit the content of this document to third parties					

1 Introduction

This document shows the procedure to follow for a correct installation of SNMP Adapter (J0000203).

Because there are different firmware versions, in this document are described all the possible situations.

Hardware installation is always the same.

2 SNMP Adapter Hardware Installation

SNMP Adapter Hardware installation has to be done following next steps:

- Connect serial cable to the device (UPS or Solar Inverter) to the “User Interface” (male 9 poles serial cable given together with SNMP)
- Connect serial cable to the SNMP Adapter (female 9 poles serial cable given together with SNMP).
- Connect Power supply to the SNMP
- Connect LAN cable provided by the customer.

After those steps you can see the two LAN (green and orange) leds blinking.

So a red circular led close to them.

Initially the red led is blinking, after around one minute (but sometimes you need also 2 or 3 minutes) it switches off and the green one will switch on.

If this doesn't happen, it means that some setting is not well set but you can modify them later as described into the next paragraphs.

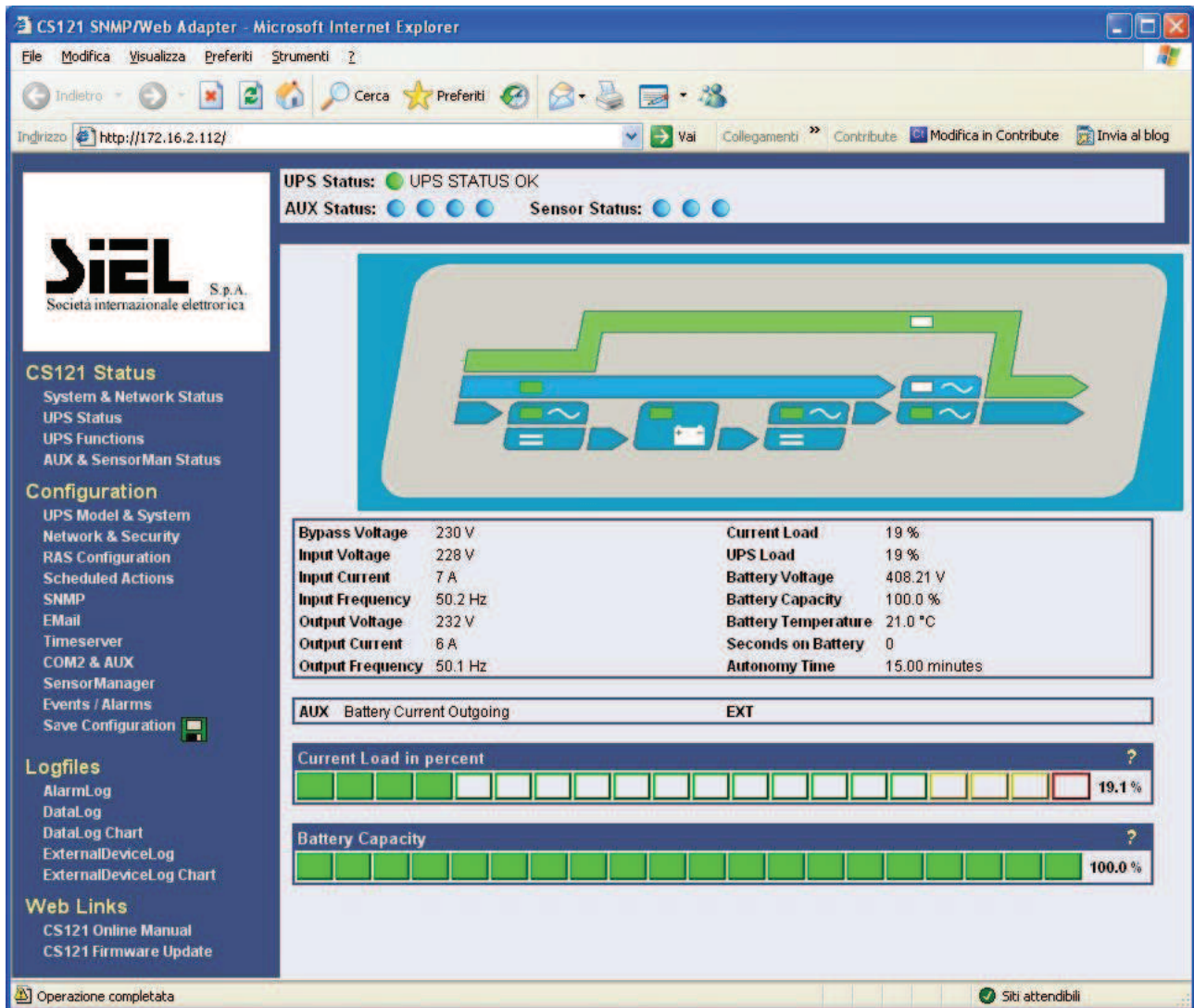
REV.	Date	Prepared by	Checked by	Issued by	ID: NUMBER
Issue/000	2008-02-01	M. Bugliesi	A. Ruggiero	P. Baggi	IV 291E
					Page 3 of 7 + FR
Proprietà riservata - A termini di legge è rigorosamente vietato riprodurre o rendere noto a terzi il contenuto del presente documento					
This is a propriety of Siel - Do not reproduce and transmit the content of this document to third parties					

3 SNMP Adapter Software Installation

Software Installation is not so hard to do. There are some specific steps to follow.

Insure that you have access to the customer network, and enter the SNMP web page:

1. Open Internet Explorer (or another browser) and type the address <http://10.10.10.10> .
- There should appear the following page:



If this page doesn't appear correctly it's because connection between device and SNMP adapter or one of the settings is not correct. The important thing is that you can see the left stripe on dark blue background of the web page.

REV.	Date	Prepared by	Checked by	Issued by	ID: NUMBER
Issue/000	2008-02-01	M. Bugliesi	A. Ruggiero	P. Baggi	IV 291E
					Page 4 of 7 + FR
Proprietà riservata - A termini di legge è rigorosamente vietato riprodurre o rendere noto a terzi il contenuto del presente documento					
This is a propriety of Siel - Do not reproduce and transmit the content of this document to third parties					

2. Click and enter the page“UPS Model & System” (circled in red int the following image).
Insert **Username:** admin and **Password:** cs121-snmp
- Verify that all data are correct and especially:
 - **UPS Model:** is the right model and it can be:
 - SavePower EVO;
 - Flexipower (if Flexipower has a Signalling 96 then it should be FlexiPower 96)
 - Lopower (only from version 3.78 on)
 - SIEL SOLAR Inverter (only from version 3.78 on)
 - **Power (VA)** and **Load (VA):** they must have the right value of the device.
 - **UPS Id:** it should be a value greater that 0 (it must not be 0) that is set via dip switch on the “User Interface” board. Usually the default value is 1for UPSes and 17 for Solar Inverter.
 - **Battery Installation Date:** Insert Battery installation date.
 - Click “Apply”(on the low-right corner)

REV.	Date	Prepared by	Checked by	Issued by	ID: NUMBER
Issue/000	2008-02-01	M. Bugliesi	A. Ruggiero	P. Baggi	IV 291E
					Page 5 of 7 + FR
Proprietà riservata - A termini di legge è rigorosamente vietato riprodurre o rendere noto a terzi il contenuto del presente documento					
This is a propriety of Siel - Do not reproduce and transmit the content of this document to third parties					

3. Enter the page “Network & Security” (marked in red in the following image) and set:
 - **Local Address, Gateway Address, Subnet Mask e DNS server.** All these information should be provided by the customer.
 - Click “Apply”(on the low-right corner)

CS121 SNMP/Web Adapter - Microsoft Internet Explorer

File Modifica Visualizza Preferiti Strumenti ?

Indietro Vai Collegamenti Contributo Modifica in Contributo Invia al blog

Indirizzo: <http://172.16.2.112/>

UPS Status: ● UPS STATUS OK
AUX Status: ● ● ● ● **Sensor Status:** ● ● ● ●

CS121 Status
 System & Network Status
 UPS Status
 UPS Functions
 AUX & SensorMan Status

Configuration
 UPS Model & System
 Network & Security
 RAS Configuration
 Scheduled Actions
 SNMP
 EMail
 Timeserver
 COM2 & AUX
 SensorManager
 Events / Alarms
 Save Configuration

Logfiles
 AlarmLog
 DataLog
 DataLog Chart
 ExternalDeviceLog
 ExternalDeviceLog Chart

Web Links
 CS121 Online Manual
 CS121 Firmware Update

Network & Security Settings

MAC Address: 00-03-05-02-08-3C
 Network Card Speed: AUTO
 Local Address: 172.16.2.112
 Gateway Address: 172.16.0.1
 Subnet Mask: 255.255.252.0
 DNS Server: 0.0.0.0

Enable Telnet Server: ☒
 Enable HTTP Server: ☒
 HTTP Port: 80
 HTTP Refresh Time: 10
 HTTP Default Page: UPS Status
 Enable HTTP Tooltips: ☒
 Enable UpsMon Server: ☒
 Use RCCMD2 Traps: ☒
 Enable RCCMD Listener: ☐
 RCCMD Listener Port: 6002
 180

Change Administrator Password:
 Confirm Password:

Change UpsMon & SS4 Password
 Password for UPSMON access and for switching AUX or SensorMan Outlets.
 Leave blank to grant access to all users.
 Confirm Password:

Use UpsMon Password for Web Pages: ☐

System Name: CS-121
 System Location:
 System Contact:
 Attached Devices: UPS protected devices

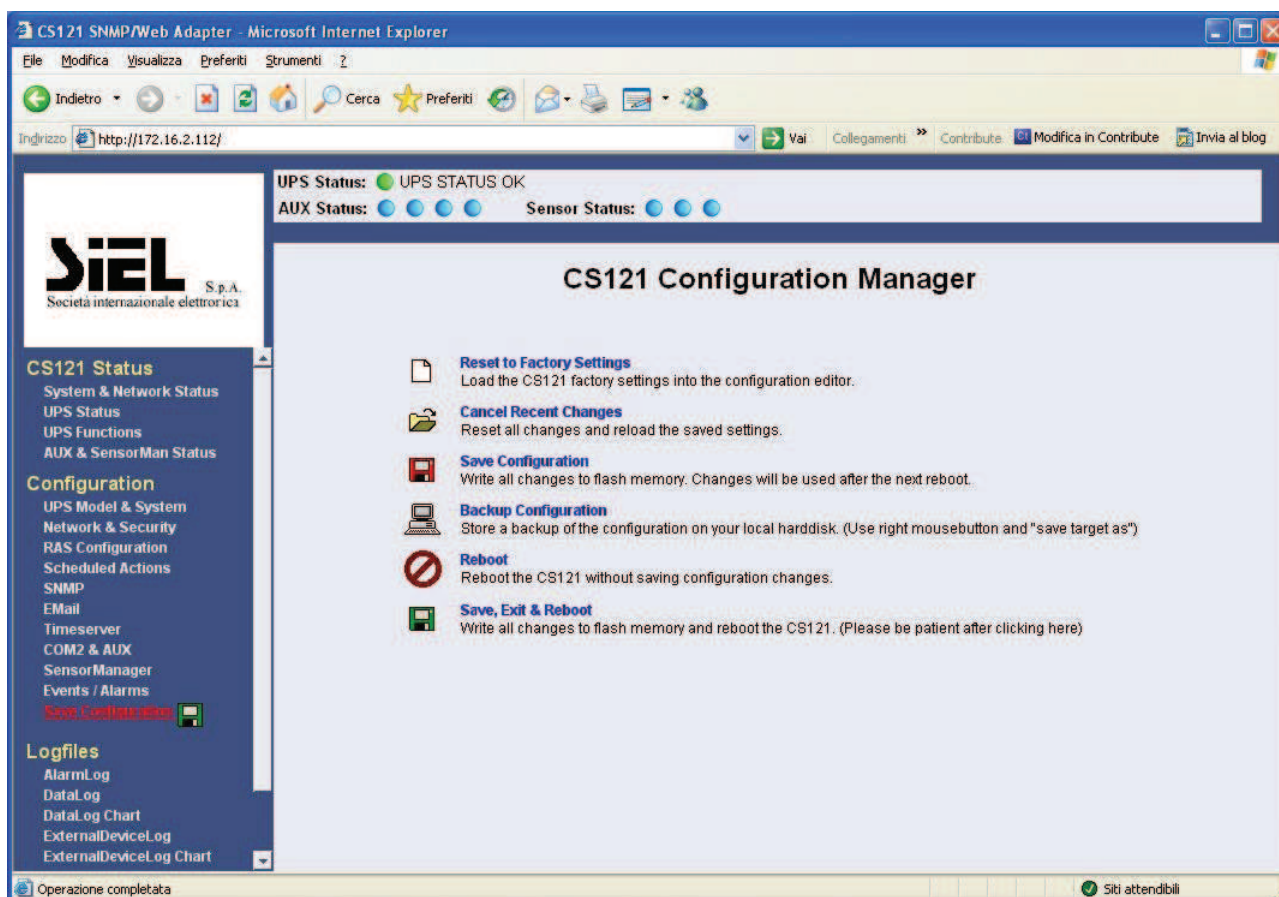
Enable SNMP Agent: ☒
 Use SNMP Authentication Traps: ☐
 Use SNMP Coldboot Traps: ☐
 SNMP Trap Version: 2
 Enable Modbus over IP: ☒
 Modbus Slave Address: 1
 Modbus Mode: RTU
 Enable LED Display Sender: ☐
 LED Display Sender ID: 1
 LED Display Listener Address: 10.10.10.10

Operazione completata Siti attendibili

REV.	Date	Prepared by	Checked by	Issued by	ID: NUMBER
Issue/000	2008-02-01	M. Bugliesi	A. Ruggiero	P. Baggi	IV 291E
					Page 6 of 7 + FR
Proprietà riservata - A termini di legge è rigorosamente vietato riprodurre o rendere noto a terzi il contenuto del presente documento This is a propriety of Siel - Do not reproduce and transmit the content of this document to third parties					

4. Enter the page “Save Configuration”(marked in red in the following image)

- Click “Save, Exit & Reboot”
- Wait around one minute for the correct reboot of the device (Sometime you can need also 2 or 3 minutes. You know that everything is ready when you see the green led switching on).
- Verify that everything works correctly entering the page with the new IP address you have just set.



REV.	Date	Prepared by	Checked by	Issued by	ID: NUMBER
Issue/000	2008-02-01	M. Bugliesi	A. Ruggiero	P. Baggi	IV 291E
					Page 7 of 7 + FR
Proprietà riservata - A termini di legge è rigorosamente vietato riprodurre o rendere noto a terzi il contenuto del presente documento					
This is a propriety of Siel - Do not reproduce and transmit the content of this document to third parties					